

RANGE	CODE	MODEL	FUNCTION
Refrigerated Counters	MACRO000570	TRTIPPTNPA	Refrigerated Counters MI - Fitted for Remote Unit

ITEM

Refrigerated counter MI 1 door -2+8°C fitted for remote unit, with top and backsplash



RANGE	CODE	MODEL	FUNCTION
Refrigerated Counters	MACRO000570	TRTIPPTNPA	Refrigerated Counters MI - Fitted for Remote Unit

ITEM

Refrigerated counter MI 1 door -2/+8°C fitted for remote unit, with top and backsplash



TECHNICAL SPECIFICATIONS

RANGE:	-2/+8°C
WIDTH (mm):	700
DEPTH (mm):	700
HEIGHT (mm):	890
WEIGHT (Kg):	100
VOLUME (m <sup>3</sup> ):	0.54
EL. POWER (kW):	0.1
VOLTAGE:	VAC230
FREQUENCY (Hz):	50Hz
INTERNAL DIM. (mm):	343x530x580(h) mm
EXTERNAL MATERIAL:	304
INTERNAL MATERIAL:	304
GROSS CAPACITY (L):	105
OPERATING MODE:	Ventilated
DOORS:	1 Door
STANDARD EQUIPMENT:	1 Plastic-coated grid GNI/1 for each door.
DEFROST TYPE:	Electric
REFRIGERANT POWER:	550
GAS TYPE:	R134a
CLIMATE CLASS:	5 +40°C 40%

DESCRIPTION

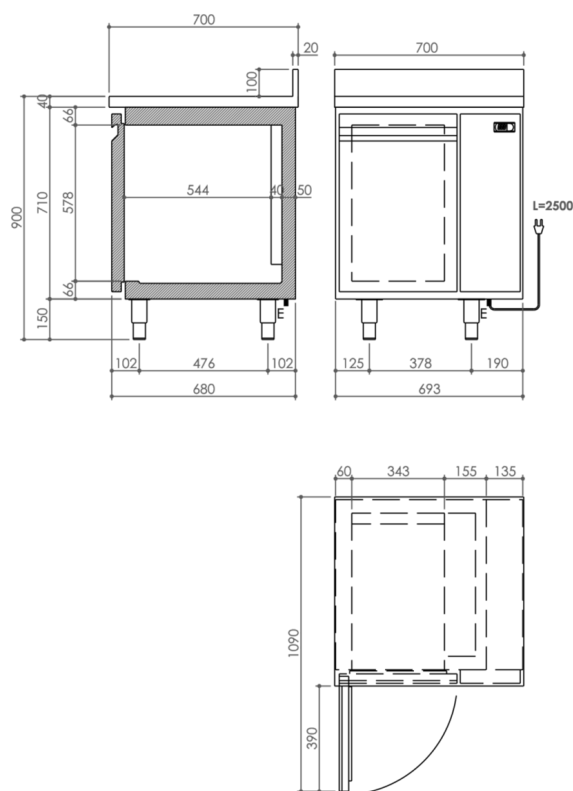
Refrigerated counter -2 +8°C with valve fitting for remote refrigeration unit. single-shell structure in stainless steel AISI 304. With top with squared edge and upstand. External scotch-brite satin finish. 60mm insulation thickness for the casing and 50mm for the doors with high density foam (40 kg/mc). External back plate in galvanized steel, as option in stainless steel AISI 304 scotch-brite. Feet in stainless steel adjuscounter in height H 140/230mm. Cell with rounded corners for a more effective internal cleaning. Self-closing doors with safety stop at 95°. Easily removable door and drawers magnetic gaskets. Ducted ventilation system on the back for a perfect and homogeneous internal temperature. Electric defrosting and automatic evaporation of condensation water. Ergonomic handles. On request with the technical compartment on the left. Standard power supply 220-240V 50/60Hz. Cooling gas R134a. Upper and lower door hinges fixed frontally to the frame (replaceable with no need to remove the worktop). Reversible doors. Equipped with 1 set of runners + 1 GN I/I plastic-coated steel grid.



RANGE	CODE	MODEL	FUNCTION
Refrigerated Counters	MACROOOO570	TRTIPPTNPA	Refrigerated Counters MI - Fitted for Remote Unit

ITEM

Refrigerated counter MI 1 door -2+8°C fitted for remote unit, with top and backsplash



**INSTALLATION SPECIFICATIONS**

(E) Electrical Connection:

VAC230 50Hz

Type of electrical plug:

with Schuko plug and cable

