

RANGE

Convection and Combination Ovens MI

MODEL

MSYE161B

FUNCTION

Direct Steam Ovens - 6x+10x GN I/I

ITEM

Electric direct steam combi oven 6 x GN I/I+10 x GN I/I, featuring touch screen control panel and automatic cooking system



RANGE

Convection and Combination Ovens MI

MODEL

MSYE161B

FUNCTION

Direct Steam Ovens - 6x+10x GN I/I

ITEM

Electric direct steam combi oven 6 x GN I/I+10 x GN I/I, featuring touch screen control panel and automatic cooking system



TECHNICAL SPECIFICATIONS

WIDTH (mm):	852
DEPTH (mm):	795
HEIGHT (mm):	1840
WEIGHT (Kg):	226
VOLUME (m <sup>3</sup> ):	1.48
EL. POWER (kW):	25.5
VOLTAGE:	VAC400-3N
OVEN CAPACITY:	6x + 10x GN I/I
GN TRAY SPACING	70
OVEN TEMP. RANGE (°C):	30-270
NUMBER OF MEALS	110/230
TRAY CAPACITY EN	5+8
EN TRAY SPACING	90
NUMBER OF CROISSANTS	144/240
IP GRADE:	IPX5





RANGE

Convection and Combination Ovens MI

MODEL

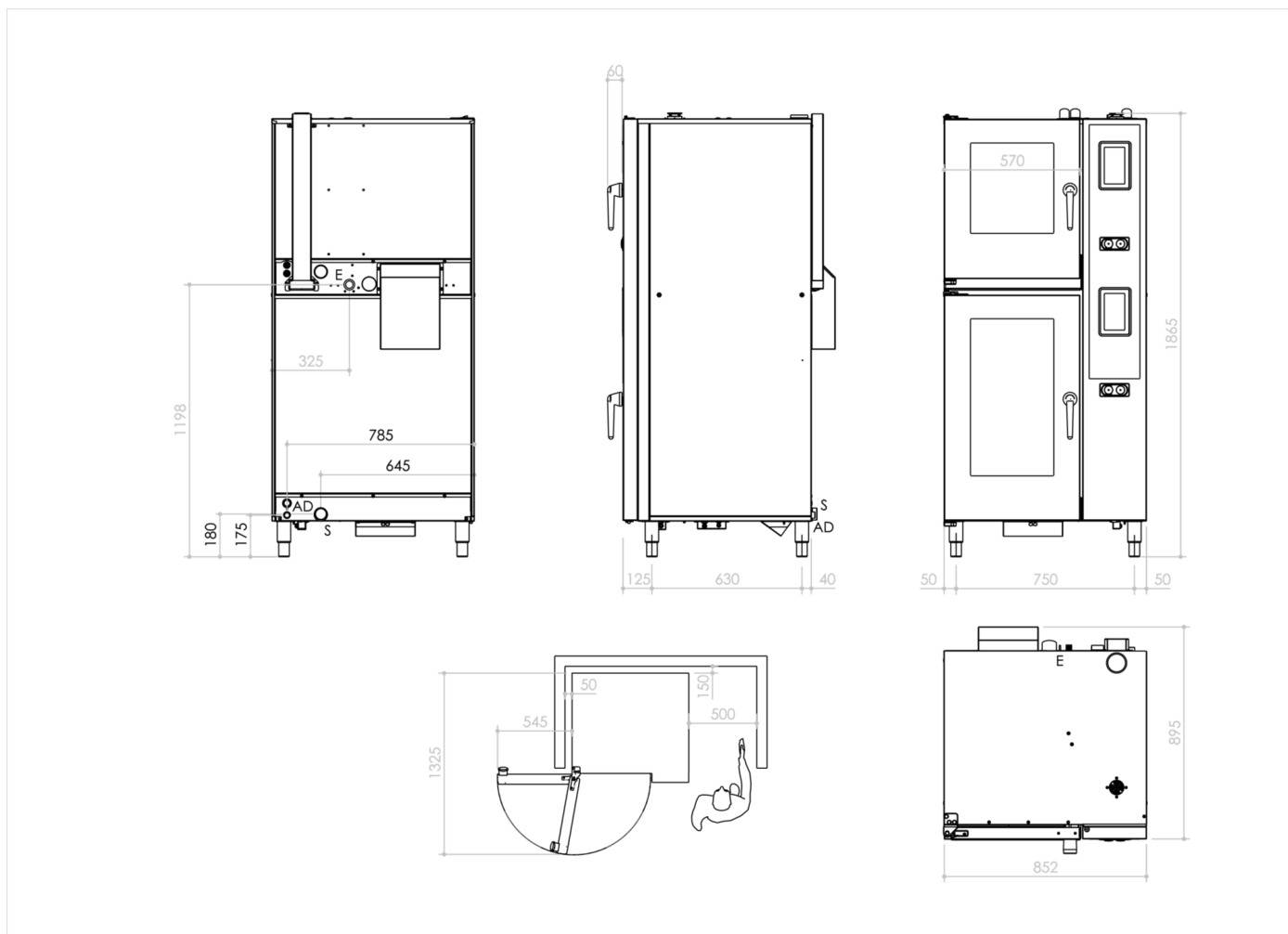
MSYEI6IB

FUNCTION

Direct Steam Ovens - 6x+IOx GN I/I

ITEM

Electric direct steam combi oven 6 x GN I/I+IO x GN I/I, featuring touch screen control panel and automatic cooking system



INSTALLATION SPECIFICATIONS

(E) Electrical Connection: VAC400-3N 50/60

(S) Output Drain: 50

