

RANGE

Roll in rapid blast chillers

CODE

RF42TMAEEGM3I2ACIA

MODEL

MSTP802

ITEM

Programmable roll in pass through blast chiller mixed temperatures 2x20 GN2/I prepared for remote air cooled unit



RANGE

Roll in rapid blast chillers

CODE

RF42TMAEEGM3I2ACIA

MODEL

MSTP802

ITEM

Programmable roll in pass through blast chiller mixed temperatures 2x20 GN2/I prepared for remote air cooled unit



TECHNICAL SPECIFICATIONS

| | |
|-----------------------------------|---------------------|
| WIDTH (mm): | 1500 |
| DEPTH (mm): | 4900 |
| HEIGHT (mm): | 2100 |
| WEIGHT (Kg): | 1915 |
| VOLUME (m ³): | 15.43 |
| EL. POWER (kW): | 2.23 |
| VOLTAGE: | 380-420 3N |
| FREQUENCY (Hz): | 50 Hz |
| INTERNAL DIM. (mm): | 880x4520x1820(h) mm |
| INSULATION THICKNESS (mm): | 80 |
| CLIMATE CLASS: | 5 |
| FAST CHILLING YIELD (+3°C) - Kg: | 600 |
| FAST CHILLING YIELD (-18°C) - Kg: | 400 |
| YIELD PER CYCLE +65/+10°C - Kg: | 340 |
| YIELD PER CYCLE +65/-18°C - Kg: | 220 |

DESCRIPTION

Blast Chiller cold rooms, floor standing pass-through model, equipped with remote condensing unit. Blast chilling from +90°C to +3°C. Tray capacity 2x20 GN2/I. Pass-through programmable cold-rooms with electronic control, fitted with automatic defrosting-system, starting up sterilizer system, extractable tray holder. Air cooled unit. Right hinged door with magnetic gasket and self-closing hinge, easy operating and washable evaporator with hinged opening deflector. Bottom tray to collect washing and condense water, removable front condensing unit grid for ease of cleaning. Output per cycle kg. 600 from +90° C to +3° C / kg.400 from +90°C to -18°C. Output per cycle according to EN17032 340 kg from +65/+10°C and 220 kg from +65/-18°. Equipped with core temperature probe. Suitable for trolley 2xMKS 202, 2xMCT202I or 4xMCT20II not delivered as standard supply.



RANGE

Roll in rapid blast chillers

CODE

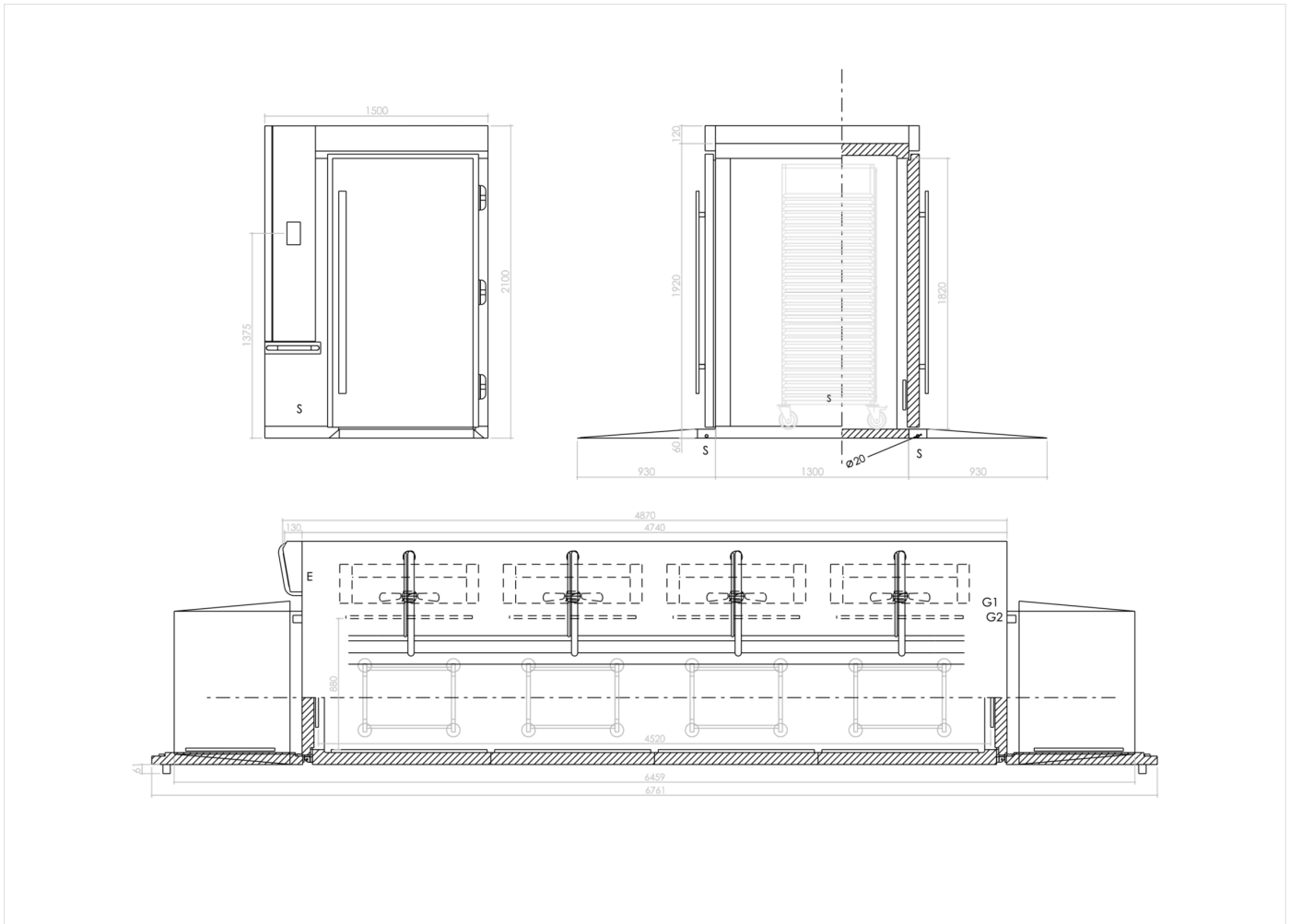
RF42TMAEEGM3I2ACIA

MODEL

MSTP802

ITEM

Programmable roll in pass through blast chiller mixed temperatures 2x20 GN2/I prepared for remote air cooled unit



INSTALLATION SPECIFICATIONS

| | |
|----------------------------|-----------------------------------|
| (E) Electrical Connection: | 380-420 3N 50 Hz |
| (S): | Drain Connection |
| (G1): | Refrigerant Gas Inlet Connection |
| (G2): | Refrigerant gas outlet connection |

