

RANGE

Rack conveyor dishwashers

CODE

CRI300720

MODEL

MRXEIO4ASS

ITEM

Rack conveyor Dishwasher RX Evo - Lh with automatic shower



RANGE

Rack conveyor dishwashers

CODE

CRI300720

MODEL

MRXEIO4ASS

ITEM

Rack conveyor Dishwasher RX Evo - Lh with automatic shower



TECHNICAL SPECIFICATIONS

WIDTH (mm):	2350
DEPTH (mm):	805
HEIGHT (mm):	1830
WEIGHT (Kg):	250
VOLUME (m ³):	3.44
GAS POWER (kW):	0
EL. POWER (kW):	19.9
VOLTAGE (V):	400V 3N
FREQUENCY (Hz):	50 Hz
BASKET SIZE (mm):	500x500
MAX PLATE DIAMETER (mm):	450
GN/EN:	GN I/I
SEC./CYCLE	BASKETS/HOUR - 10°C



RANGE

Rack conveyor dishwashers

CODE

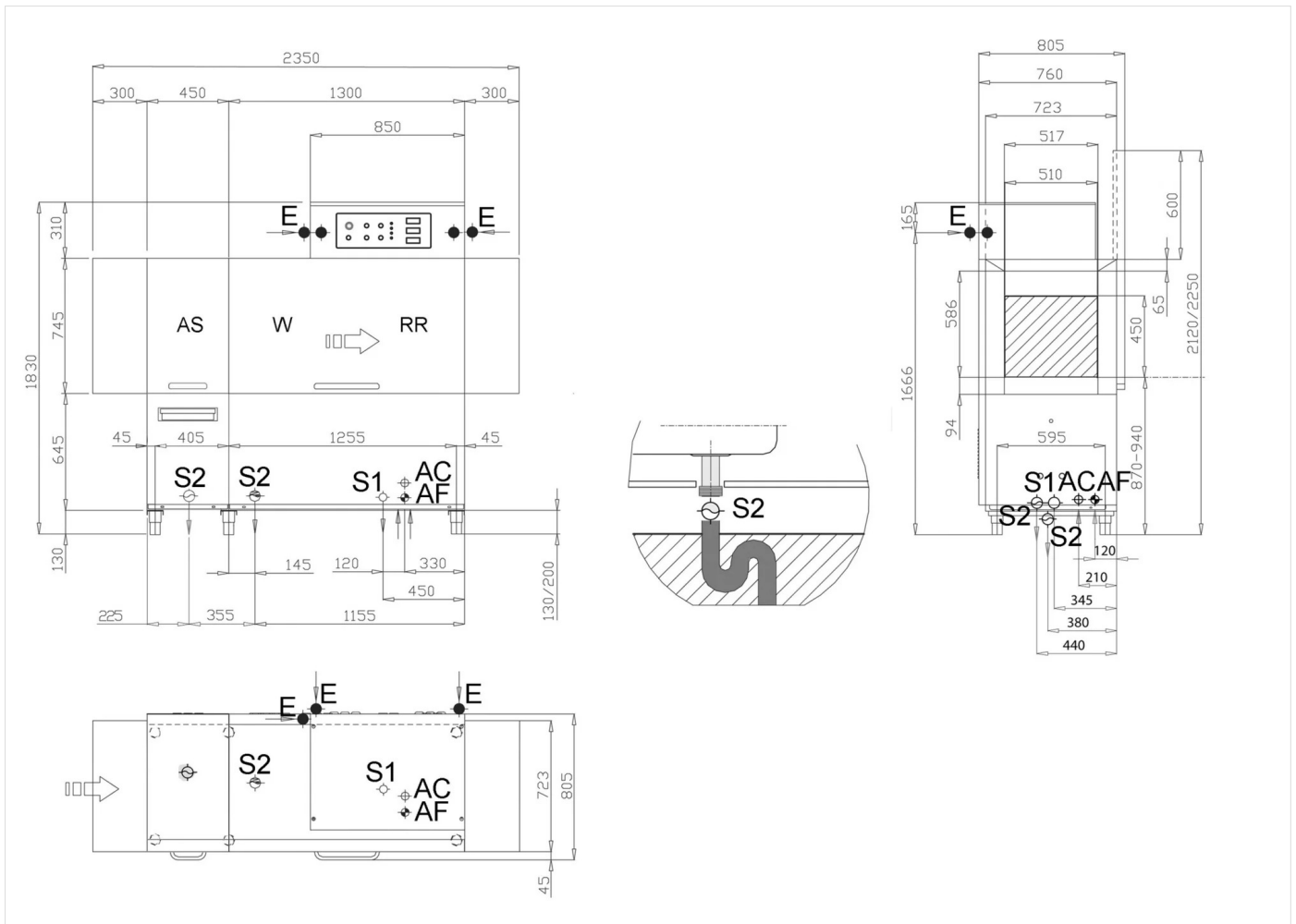
CRI300720

MODEL

MRXEIO4ASS

ITEM

Rack conveyor Dishwasher RX Evo - Lh with automatic shower



INSTALLATION SPECIFICATIONS

(E) Electrical Connection:	400V 3N 50 Hz
(AF) Cold Water Inlet:	Ø3/4-H=150mm
(AC) Hot Water Inlet:	Ø3/4-H=150mm-60°C(2/4bar)
(S) Output Drain:	Ø28mm-H=200mm

