

RANGE

Rack conveyor dishwashers

CODE

CRI300960

MODEL

MRXE244ASS

ITEM

Rack conveyor Dishwasher RX Evo - Lh with pre-rinse module and automatic shower



RANGE

Rack conveyor dishwashers

CODE

CRI300960

MODEL

MRXE244ASS

ITEM

Rack conveyor Dishwasher RX Evo - Lh with pre-rinse module and automatic shower



TECHNICAL SPECIFICATIONS

WIDTH (mm):	3250
DEPTH (mm):	805
HEIGHT (mm):	1830
WEIGHT (Kg):	405
VOLUME (m ³):	4.85
GAS POWER (kW):	0
EL. POWER (kW):	28.1
VOLTAGE (V):	400V 3N
FREQUENCY (Hz):	50 Hz
BASKET SIZE (mm):	500x500
MAX PLATE DIAMETER (mm):	450
GN/EN:	GN I/I

SEC./CYCLE

BASKETS/HOUR - 10°C



RANGE

Rack conveyor dishwashers

CODE

CRI300960

MODEL

MRXE244ASS

ITEM

Rack conveyor Dishwasher RX Evo - Lh with pre-rinse module and automatic shower**DESCRIPTION**

Electric dishwasher with basket feed-through. Made of stainless steel AISI 304. Pre-wash with filter, pre-wash, wash and double rinse, feed from left to right. Rounded stainless steel AISI 316 tanks. Self-cleaning vertical wash pumps, protected against electrical overloads. Double side traction system with built-in clutch that prevents derailment. AISI 304 stainless steel boilers, resistant to chemical aggression, fully insulated to reduce thermal losses. Simple and intuitive low-voltage touch screen control panel with IP65 protection rating, built with membrane keypad for easy cleaning. Stainless steel washing and rinsing arms, removable without the use of tools both for ordinary cleaning operations and to facilitate the change of direction. Stainless steel surface filters on all tanks, easily removable without detaching washing arms, to keep the water clean and free from food scraps. Insulated double skin door, counterbalanced, equipped with anti-drop safety system. Two speed traction system with built-in clutch. Wash and rinse economisers. They are only activated when baskets are in the designated area, avoiding waste of water. Pressure reducer to optimise the mains pressure, stabilising it for optimal rinsing and reduced consumption. Non-return valve to prevent backflow of dishwasher water into the water mains, preventing contamination in the event of an external low pressure. Baskets/hour 185/238. Pre-wash pump kW 2,18. Washing pump kW 1,75. Pre-rinse pump kW 0,2. Boiler heating element kW 6+9. Tank heating element kW 9. Pre-rinse tank capacity Lt. 40 85. Washing tank capacity Lt. 85. Pre-rinse tank capacity Lt. 4,5. Boiler capacity Lt. 2x10. Water consumption Lt. 280. Basket size 500x500 cm. Useful height mm. 450. Standard accessories: 1 x Dish basket, 1 x Glass basket, 1 x Cutlery basket 8 places, 1 x Tray basket.



RANGE

Rack conveyor dishwashers

CODE

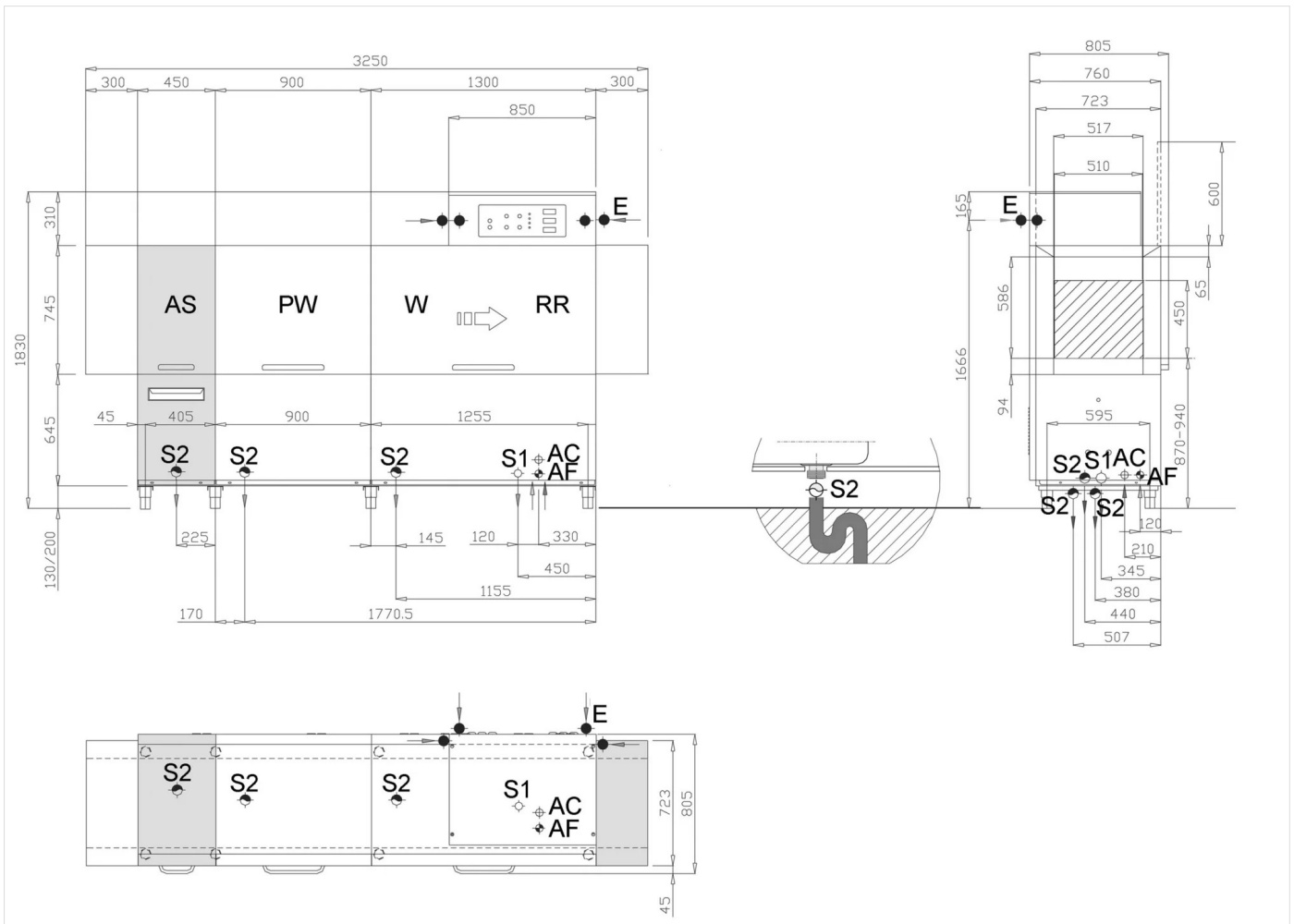
CRI300960

MODEL

MRXE244ASS

ITEM

Rack conveyor Dishwasher RX Evo - Lh with pre-rinse module and automatic shower



INSTALLATION SPECIFICATIONS

(E) Electrical Connection:	400V 3N 50 Hz
(AF) Cold Water Inlet:	Ø3/4-H=150mm
(AC) Hot Water Inlet:	Ø3/4-H=150mm-60°C(2/4bar)
(S) Output Drain:	Ø28mm-H=200mm

