

RANGE

**Modular Preparation**

CODE

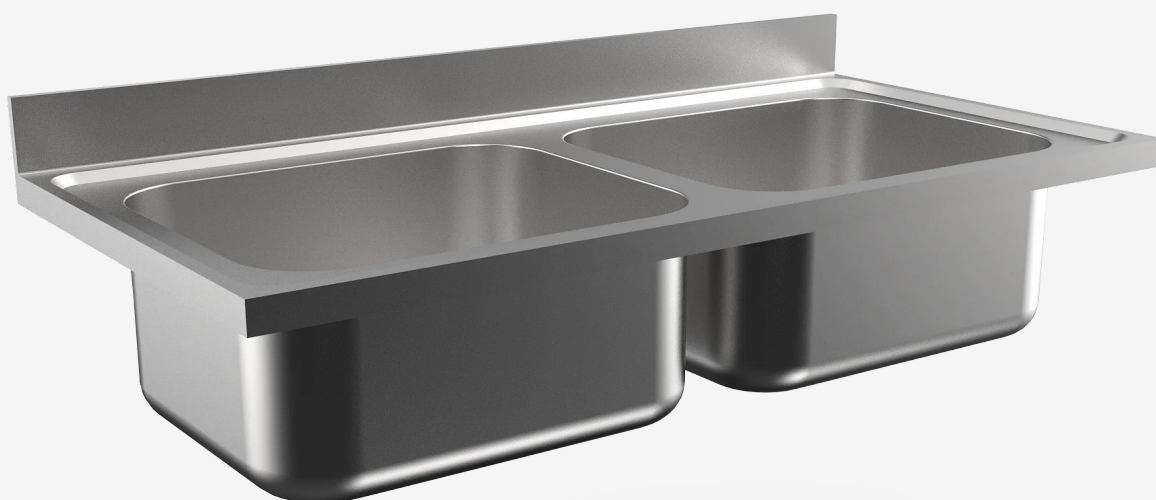
**MA87610000**

MODEL

**PL1426**

ITEM

**Twin bowl worktop with two bowls dim. 600x500x315h.**



RANGE

**Modular Preparation**

CODE

**MA87610000**

MODEL

**PLI426**

ITEM

**Twin bowl worktop with two bowls dim. 600x500x315h.**



#### TECHNICAL SPECIFICATIONS

WIDTH (mm):	<b>1400</b>
DEPTH (mm):	<b>700</b>
HEIGHT (mm):	<b>350</b>
WEIGHT (Kg):	<b>54</b>
VOLUME (m <sup>3</sup> ):	<b>0.48</b>

#### DESCRIPTION

Twin bowl worktop with two bowls dim. 600x500x315h. 40mm thick AISI 304 stainless steel worktop, soundproofed and with a perimeter groove. Complete with overflow pipe and 1 1/2" drain plug.

