

RANGE

**Modular Preparation**

CODE

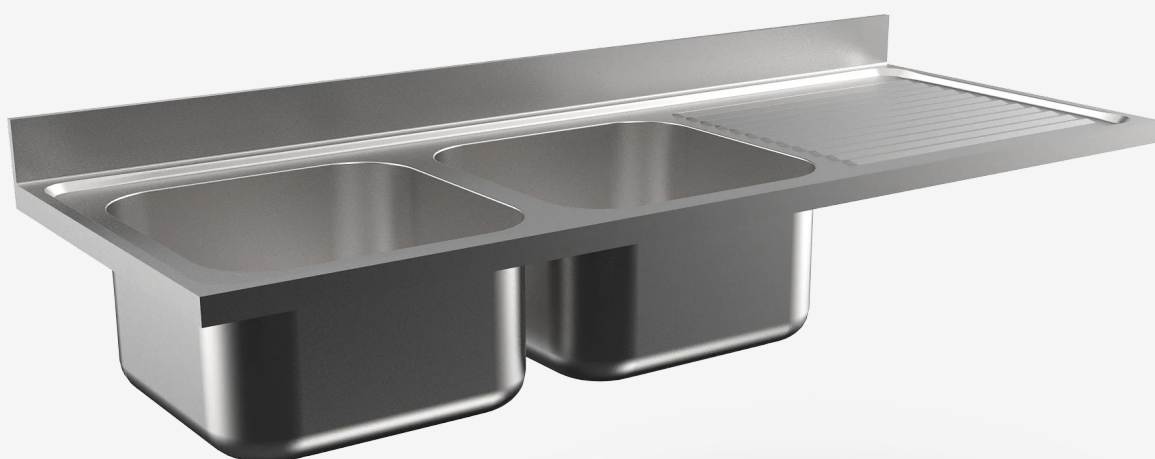
**MA87619000**

MODEL

**PLI825D**

ITEM

**Twin bowl worktop with two bowls dim. 500x500x300h and right-hand drainer.**



RANGE

**Modular Preparation**

CODE

**MA87619000**

MODEL

**PL1825D**

ITEM

**Twin bowl worktop with two bowls dim. 500x500x300h and right-hand drainer.**



#### TECHNICAL SPECIFICATIONS

WIDTH (mm):	<b>1800</b>
DEPTH (mm):	<b>700</b>
HEIGHT (mm):	<b>350</b>
WEIGHT (Kg):	<b>58</b>
VOLUME (m <sup>3</sup> ):	<b>0.62</b>
TANK DIM. (mm):	<b>500x500x300h.</b>

#### DESCRIPTION

Twin bowl worktop with two bowls dim. 500x500x300h and right-hand drainer. 40mm thick AISI 304 stainless steel worktop, soundproofed and with a perimeter groove. Complete with overflow pipe and 1 1/2" drain plug.

