

RANGE

Modular Preparation

CODE

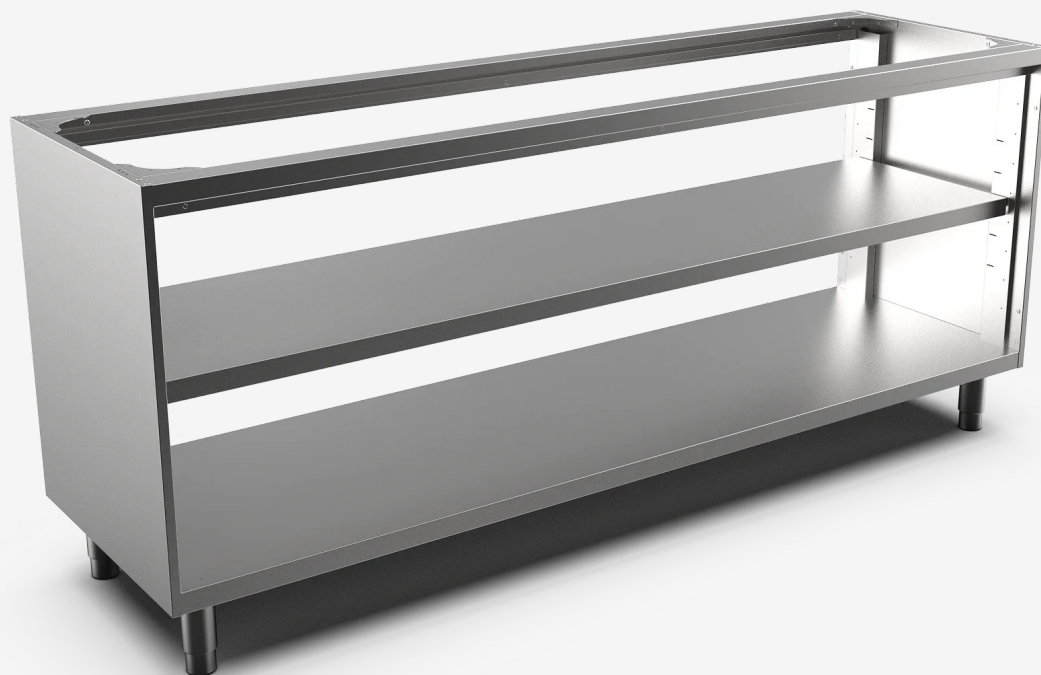
MAMPOOO5630

MODEL

BG2600200

ITEM

Pass-through base open compartment with shelf L. 2000 D. 600



RANGE

Modular Preparation

CODE

MAMPOOO5630

MODEL

BG2600200

ITEM

Pass-through base open compartment with shelf L. 2000 D. 600



TECHNICAL SPECIFICATIONS

WIDTH (mm):	2000
DEPTH (mm):	575
HEIGHT (mm):	860
WEIGHT (Kg):	100
VOLUME (m ³):	1.05

DESCRIPTION

Pass-through open base cupboard with intermediate shelf. Made of stainless steel AISI 304. AISI 304 stainless steel height adjustable feet. Depth 600mm.

