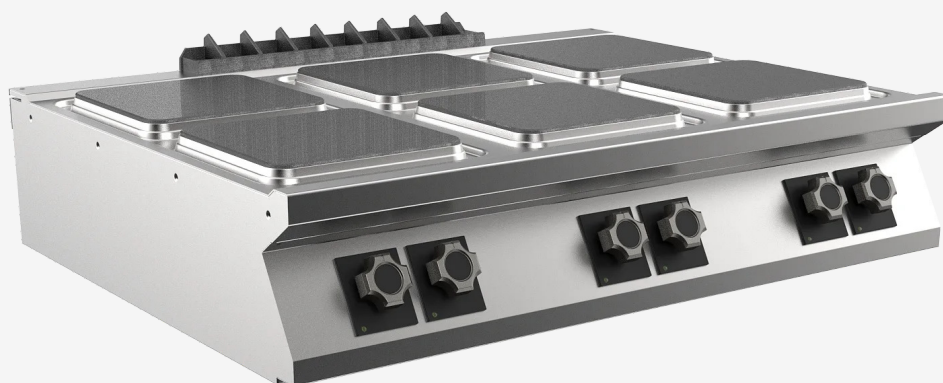


RANGE	CODE	MODEL	FUNCTION
MI - 90	MAMCOOO3260	PC9I2ETPQ	Electric Cookers

ITEM

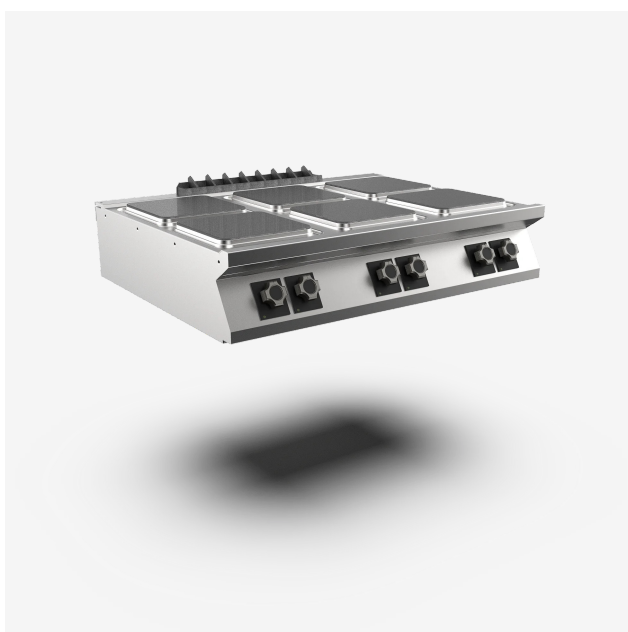
6 square hotplate electric boiling top



RANGE	CODE	MODEL	FUNCTION
MI - 90	MAMCOOO3260	PC9I2ETPQ	Electric Cookers

ITEM

6 square hotplate electric boiling top



TECHNICAL SPECIFICATIONS

WIDTH (mm):	1200
DEPTH (mm):	920
HEIGHT (mm):	250
WEIGHT (Kg):	101
VOLUME (m ³):	1.2
EL. POWER (kW):	24
VOLTAGE:	VAC400-3N
COOKING ZONES N°:	6
COOKING ZONES DIM. (mm):	6x 300x300mm
COOKING ZONE DETAILS:	6x 4kW
IP GRADE:	IPX5

DESCRIPTION

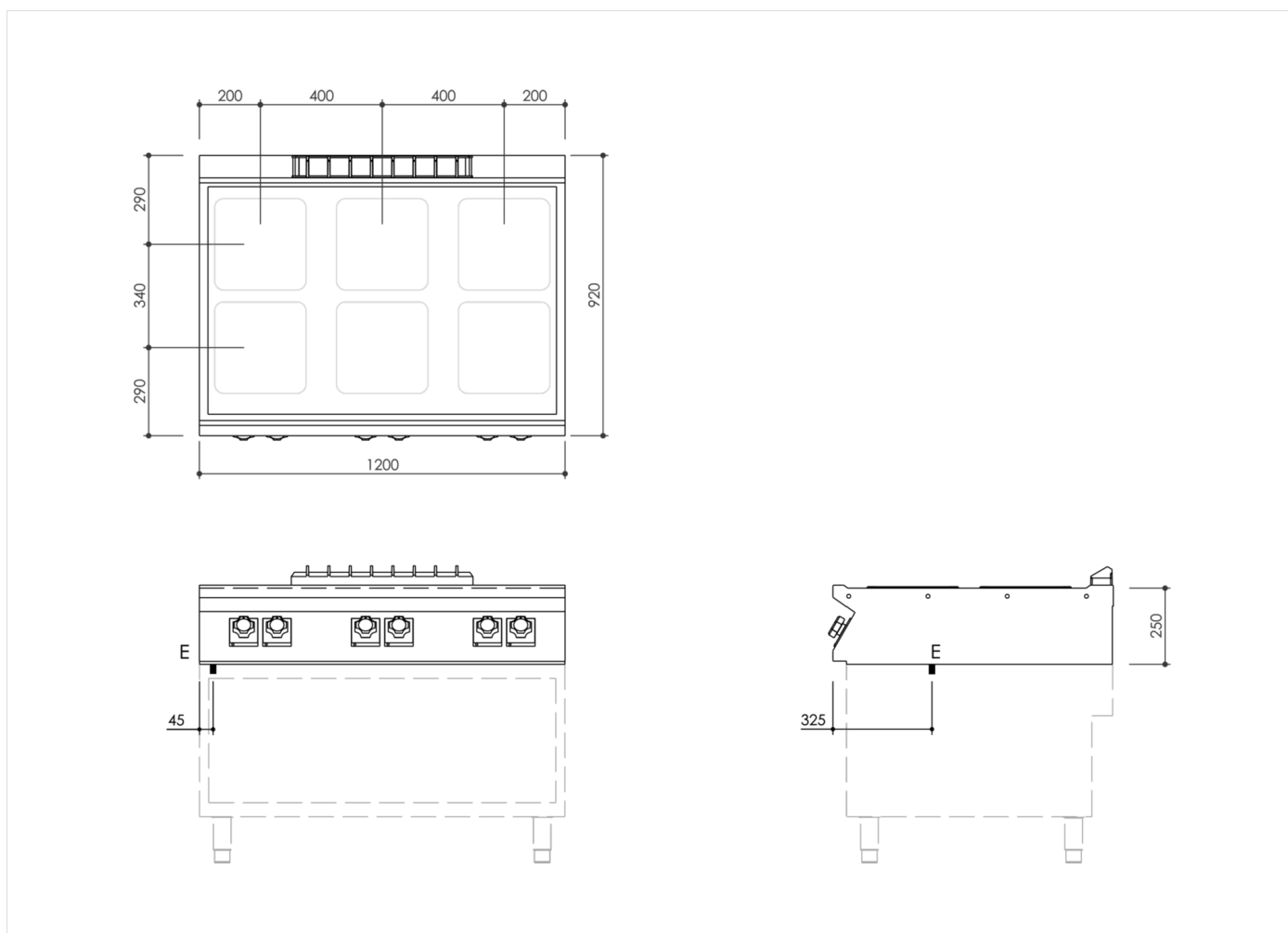
Electric boiling top in AISI 304 stainless steel. 20/10 pressed steel top with anti-spill front edge, designed for flush alignment with hermetic seal supplied. Top designed to accommodate water column accessory. Appliance composed of 6 cast-iron 300x300 mm square hotplates, hermetically sealed to the top, each with 4 kW output. Ergonomic knobs shaped to prevent water infiltration, equipped with integral indicator lights for instant recognition of operation and temperature. 7-position heat adjustment. Hotplates equipped with automatic reset safety thermostat that trips if the appliance is switched on with an unsuitable pan or no pan at all. IPX5 water-resistant rating.



RANGE	CODE	MODEL	FUNCTION
MI - 90	MAMCOOO3260	PC9I2ETPQ	Electric Cookers

ITEM

6 square hotplate electric boiling top



INSTALLATION SPECIFICATIONS

(E) Electrical Connection: **VAC400-3N 50/60Hz**

