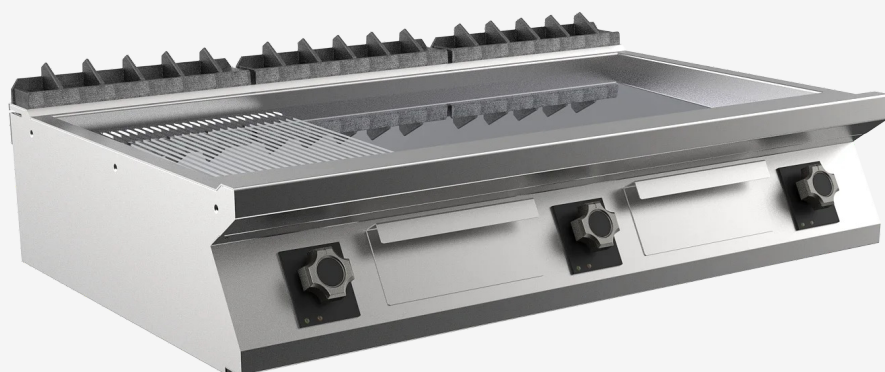


| RANGE | CODE | MODEL | FUNCTION |
|---------|-------------|-----------|----------|
| MI - 90 | MAMCOOO4480 | FT9I2EMCT | Griddles |

ITEM

Electric griddle top with 2/3 smooth and 1/3 ribbed chromed plate



| | | | |
|---------|-------------|-----------|----------|
| RANGE | CODE | MODEL | FUNCTION |
| MI - 90 | MAMCOOO4480 | FT9I2EMCT | Griddles |

ITEM

Electric griddle top with 2/3 smooth and 1/3 ribbed chromed plate



TECHNICAL SPECIFICATIONS

| | |
|---------------------------|--------------------------------------|
| WIDTH (mm): | 1200 |
| DEPTH (mm): | 920 |
| HEIGHT (mm): | 250 |
| WEIGHT (Kg): | 143 |
| VOLUME (m ³): | 0.25 |
| EL. POWER (kW): | 22.5 |
| VOLTAGE: | VAC400-3N |
| COOKING ZONES N°: | 3 |
| COOKING ZONES DIM. (mm): | 1135x700mm |
| COOKING ZONE DETAILS: | 3x 7.50 |
| PRODUCT SPECIFICATIONS: | 2/3 Smooth, 1/3 Ribbed Chromed Plate |
| IP GRADE: | IPX5 |
| TEMP. RANGE (°C): | 110-280 |

DESCRIPTION

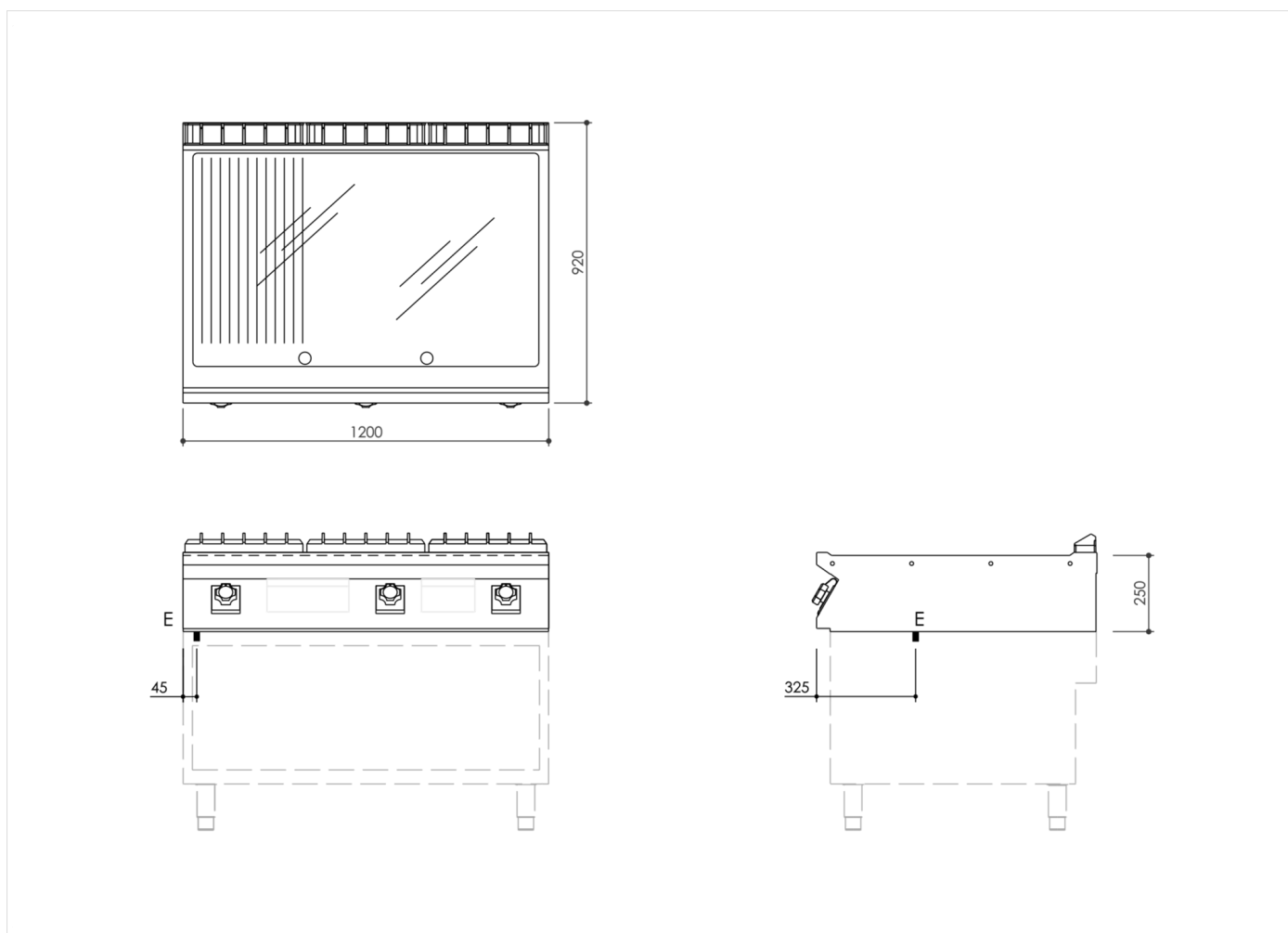
Electric griddle in AISI 304 stainless steel. 20/10 pressed steel top with anti-spill front edge, designed for flush alignment with hermetic seal supplied. Top designed to accommodate water column accessory. Cooking surface with sloping mirror-polished hotplate, 1/3 ribbed 2/3 smooth. Hotplate recessed 40 mm compared to worktop, fully welded construction for guaranteed ease of cleaning. Cooking surface with 65 mm cold zone at front of hotplate. Round Ø 40 mm drain hole for fat. Grease collection tub with 1.5 litre capacity. Heating by means of armoured elements in Incoloy. Heat control knob shaped to prevent water infiltration, equipped with integral indicator lights for instant recognition of heating and correct operation of the appliance. Cooking temperature thermostatically controlled, with adjustment from 110 to 280 °C. Safety thermostat trips in the event of working thermostat malfunction. Cooking surface 1135x700 mm. Scraper supplied for smooth hotplate. The product complies with EC regulation 1935/2004 and Italian ministerial decree 21/03/1973 (Materials and Objects intended to come into contact with Food) MOCA. IPX5 water-resistant rating.



| RANGE | CODE | MODEL | FUNCTION |
|---------|-------------|-----------|----------|
| MI - 90 | MAMCOOO4480 | FT9I2EMCT | Griddles |

ITEM

Electric griddle top with 2/3 smooth and 1/3 ribbed chromed plate



INSTALLATION SPECIFICATIONS

(E) Electrical Connection: **VAC400-3N 50/60Hz**

