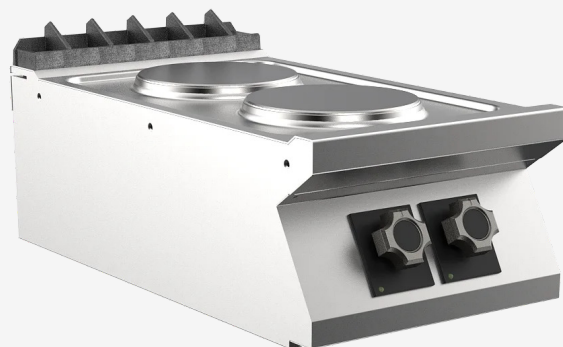


RANGE	CODE	MODEL	FUNCTION
MI - 70	MAMCOOOO250	PC74ETPT	Electric Cookers

ITEM

2 circular hotplate electric boiling top



RANGE	CODE	MODEL	FUNCTION
MI - 70	MAMCOOOO250	PC74ETPT	Electric Cookers

ITEM

2 circular hotplate electric boiling top



TECHNICAL SPECIFICATIONS

WIDTH (mm):	400
DEPTH (mm):	750
HEIGHT (mm):	250
WEIGHT (Kg):	27
VOLUME (m ³):	0.2
EL. POWER (kW):	5.2
VOLTAGE:	VAC400 3N / VAC230 3
COOKING ZONES N°:	2
COOKING ZONES DIM. (mm):	2 x Ø 220
COOKING ZONE DETAILS:	2 x 2,6 kW
IP GRADE:	IPX5
TEMP. RANGE (°C):	0-500 °C

DESCRIPTION

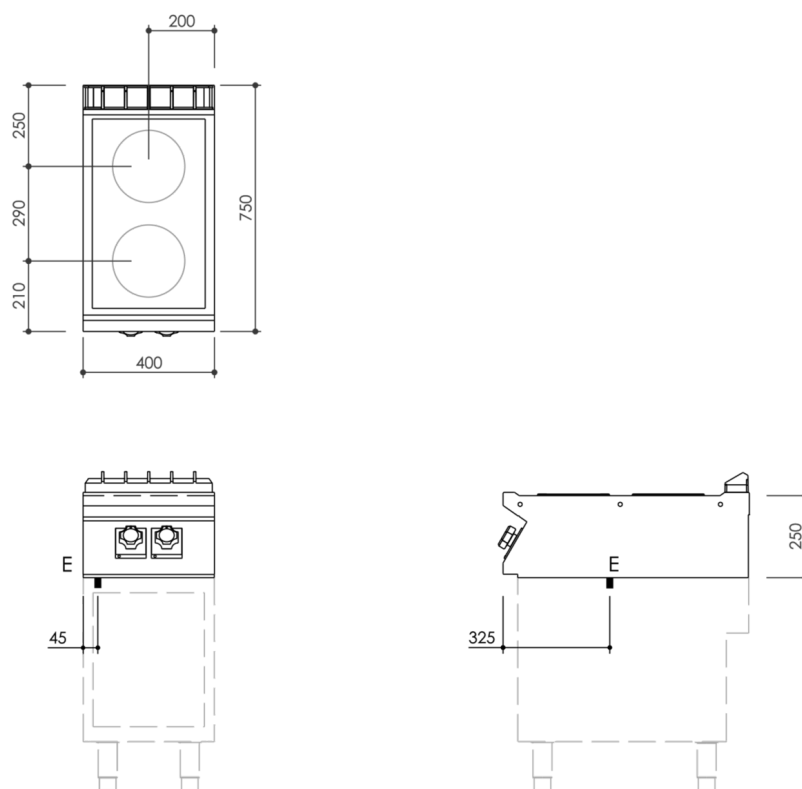
Electric boiling top in AISI 304 stainless steel. 20/10 pressed steel top with anti-spill front edge, designed for flush alignment with hermetic seal supplied. Top designed to accommodate water column accessory. Appliance comprising 2 round Ø 220 mm cast-iron hotplates hermetically sealed to the top, each with 2.6 kW output. Ergonomic knobs shaped to prevent water infiltration, equipped with integral indicator lights for instant recognition of operation and temperature. 7-position heat adjustment. Hotplates equipped with automatic reset safety thermostat that trips if the appliance is switched on with an unsuitable pan or no pan at all. IPX5 water-resistant rating.



RANGE	CODE	MODEL	FUNCTION
MI - 70	MAMCOOOO250	PC74ETPT	Electric Cookers

ITEM

2 circular hotplate electric boiling top



INSTALLATION SPECIFICATIONS

(E) Electrical Connection: **VAC400 3N / VAC230 3 50/60Hz**

